

A Guide to Common Scalp Conditions



Produced by



Supplier of Capasal Therapeutic Shampoo

Capasal™ Therapeutic Shampoo

Salicylic acid, coconut oil, distilled coal tar

Capasal is a specially formulated therapeutic shampoo for the treatment of dry, scaly scalp conditions.

Capasal Therapeutic Shampoo contains 3 active ingredients;

Salicylic acid – to loosen and remove scale for improved appearance

Coconut oil – to soften and moisturise the scalp

Distilled coal tar – an anti-psoriatic and anti-itch to reduce scratching

Capasal Therapeutic Shampoo can be used for all of the conditions shown inside. It is also extremely efficient at washing out previously applied ointments or creams.



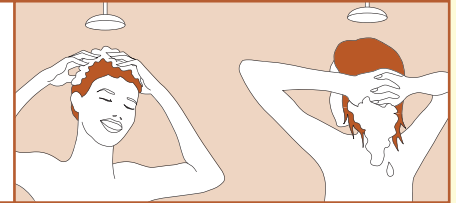
Good Hair Washing Technique

For scaly scalp shampoos to have their best effect, use a good hair washing technique.

Apply a small amount (the size of a 50 pence coin for short hair, adjusting up depending on length/thickness of hair) to wet hair and massage into the scalp. Leave this for a few minutes to loosen scale and allow the active ingredients to get to work. Remove the foam from the hair using the hands (this will remove the scales with it) and then rinse. Repeat if necessary.

Capasal can be used daily if required, reducing frequency of use to once or twice a week as the condition improves. Thereafter, occasional use may be necessary.

Wet hair and apply shampoo to produce a lather. Leave in place for a few minutes then physically remove foam with the hands before rinsing. Repeat if necessary.



Cradle Cap




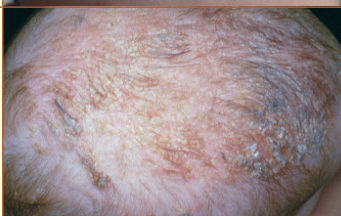

A small amount of Capasal Therapeutic Shampoo should be used, sufficient to produce a lather. Wash off immediately with warm water. Gently pat the scalp dry with a towel.

Remember to rinse using a back washing technique, with baby's head supported by a hand and tilted backwards to avoid getting shampoo into the baby's eyes.

Open here

A Guide to Common Scalp Conditions

This handy reference guide describes the typical features of common scalp conditions. All of these scalp conditions can be treated with Capasal Therapeutic Shampoo.

| Condition | Scale Description | Scalp Description | Other features | Other affected sites | |
|--|--|---|--|--|---|
| Dandruff (Pityriasis capitis) | <ul style="list-style-type: none"> • Small, white or grey flakes • Loosely attached to the scalp | <ul style="list-style-type: none"> • Normal • No hair loss | <ul style="list-style-type: none"> • Not usually itchy | <ul style="list-style-type: none"> • No rash elsewhere |  |
| Seborrhoeic Dermatitis | <ul style="list-style-type: none"> • Large, yellow, greasy appearance, may form a crust • Fixed to the scalp | <ul style="list-style-type: none"> • Inflamed-red • No hair loss | <ul style="list-style-type: none"> • Slightly itchy | <ul style="list-style-type: none"> • Inflamed, red, greasy, scaly skin behind the ears, eyebrows and around the nose |  |
| Scalp Psoriasis | <ul style="list-style-type: none"> • Small, silvery • Fixed to the scalp | <ul style="list-style-type: none"> • Thick, clearly marked plaques • May extend to beyond the hairline • Hair thinning may occur | <ul style="list-style-type: none"> • Not usually itchy • May bleed slightly when scales are scratched | <ul style="list-style-type: none"> • Psoriasis can occur anywhere on the body |  |
| Atopic Eczema | <ul style="list-style-type: none"> • Generally rough and scaly | <ul style="list-style-type: none"> • Pink rash, poorly defined edge | <ul style="list-style-type: none"> • Starts after 3 months of age • Very itchy | <ul style="list-style-type: none"> • Babies – often face and then body • Older children – around flexures (inside knees, elbows, etc.) |  |
| Cradle Cap (Infantile Seborrhoeic Dermatitis) | <ul style="list-style-type: none"> • Whitish-yellow, greasy scaling | <ul style="list-style-type: none"> • Inflamed-sometimes red | <ul style="list-style-type: none"> • Mostly starts within first 3 months of age • Usually resolves by 6-12 months • Not usually itchy | <ul style="list-style-type: none"> • Eyebrows, ears, around the nose and nappy area can be affected |  |

Prescribing Information

Capasal™ Therapeutic Shampoo

**Salicylic acid 0.5% w/w, coconut oil 1.0% w/w,
distilled coal tar 1.0% w/w.**

Uses: As a shampoo in the treatment of dry, scaly scalp conditions such as seborrhoeic eczema, seborrhoeic dermatitis, pityriasis capitis, psoriasis and cradle cap in children. It may also be used to remove previous scalp applications.

Directions: Adults, children and the elderly: Use as a shampoo, daily if necessary, reducing the frequency of use to once or twice a week as the condition improves. Thereafter, occasional use may be necessary. Wet the hair thoroughly. Massage a small amount of the shampoo into the scalp, leaving on for a few minutes. Remove as much lather as possible with the hands, before rinsing thoroughly under running water. Repeat if necessary.

Contra-indications, warnings, side effects etc: Please refer to SPC for full details before prescribing. Do not use if sensitive to any of the ingredients. In case of irritation, or if there is no improvement after 4 weeks, or the scalp condition seems to look or feel worse, discontinue treatment. Keep away from the eyes. Keep out of the sight and reach of children.

Package quantity, NHS price and MA number: 250ml bottle £5.29, PL 00173/0048.

Legal category: [P].

MA holder: Dermal Laboratories, Tatmore Place, Gosmore, Hitchin, Herts, SG4 7QR, UK.

Date of preparation: April 2023.

'Capasal' is a trademark.

Adverse events should be reported. Reporting forms and information can be found at yellowcard.mhra.gov.uk. Adverse events should also be reported to Dermal.

www.dermal.co.uk



DERMAL
TOPICAL INNOVATION